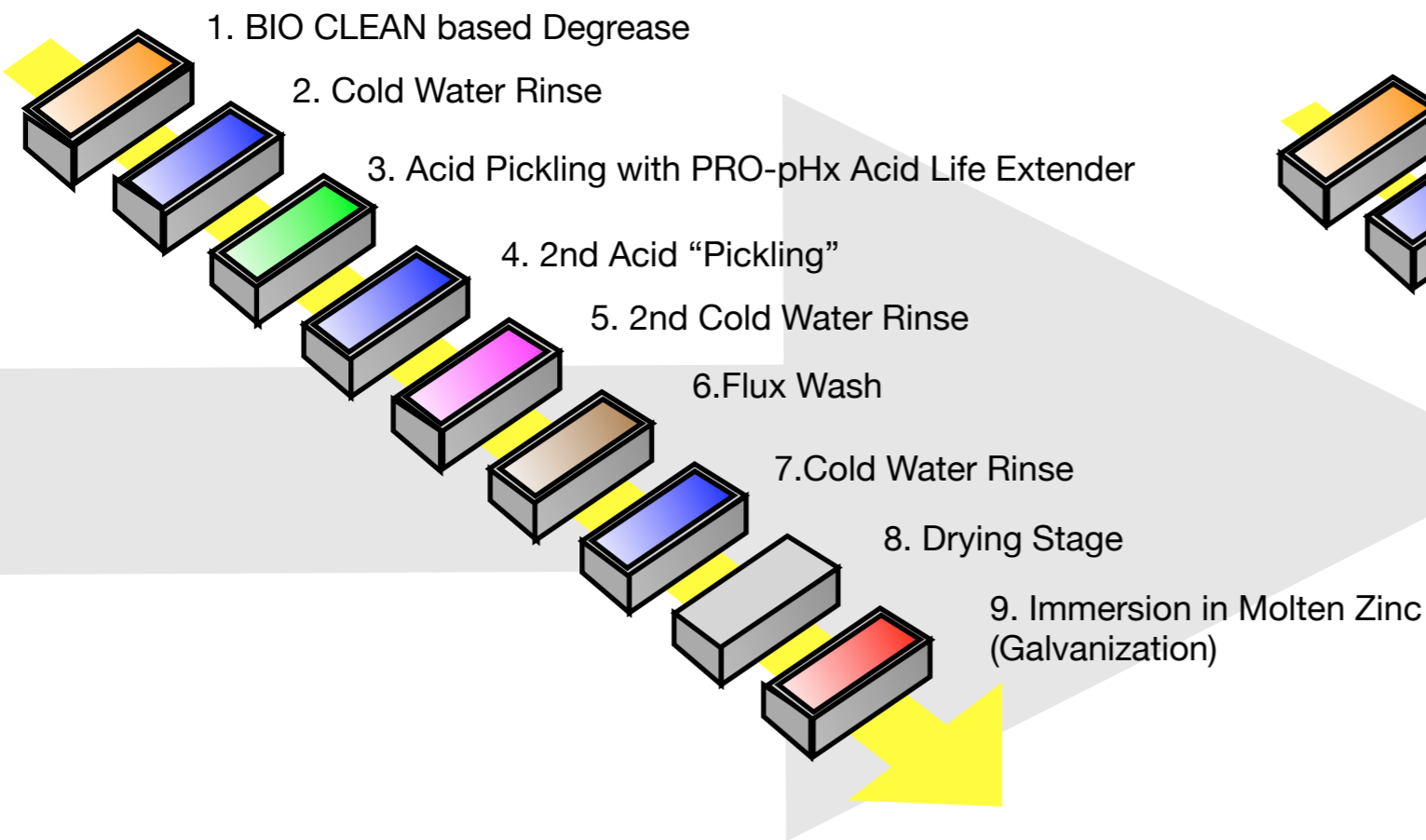
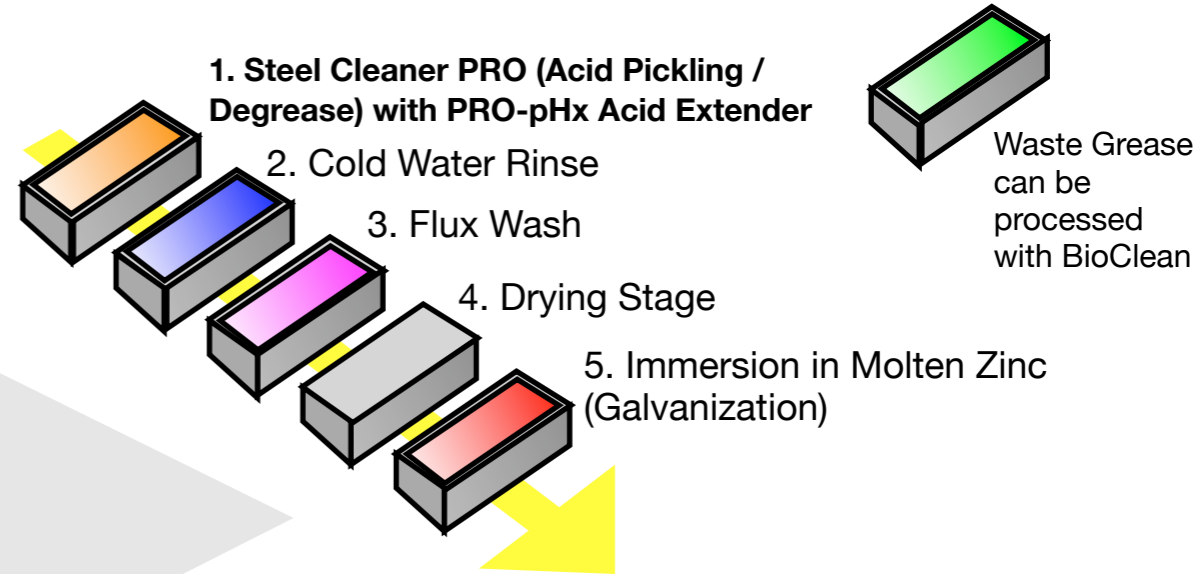


SC PRO Compatible with PRO-pHx + BioClean Systems

Traditional System Steel Process



Accelerated Process with Steel Cleaner PRO Detergent Additive



* Pickling = Process of removing soil, dirt, oxidation from raw steel

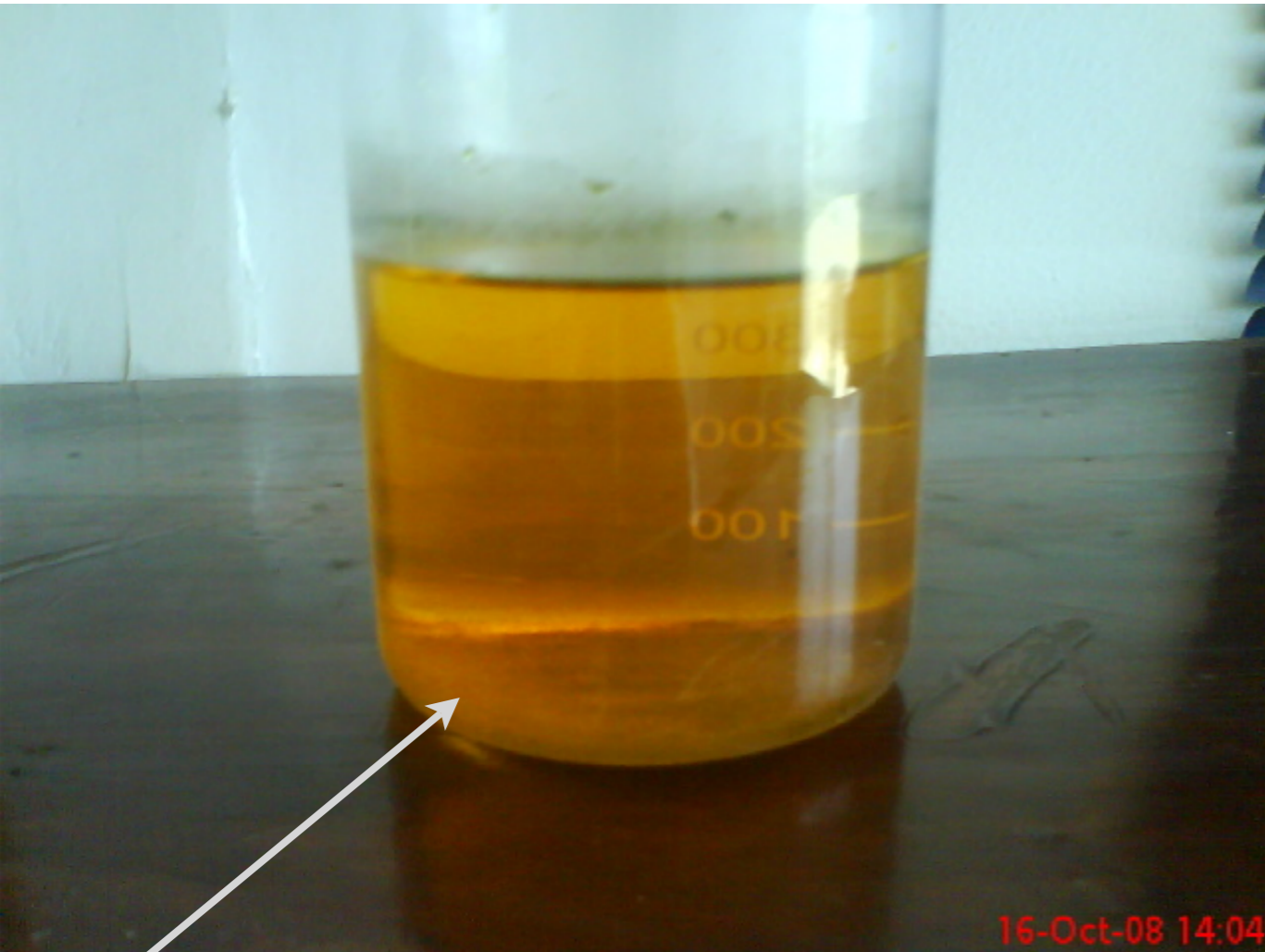
Steel Cleaner PRO is compatible with Bacterial Based Grease Systems

Steel Cleaner PRO is neutral solution (pH 7) does not affect bacterial solution

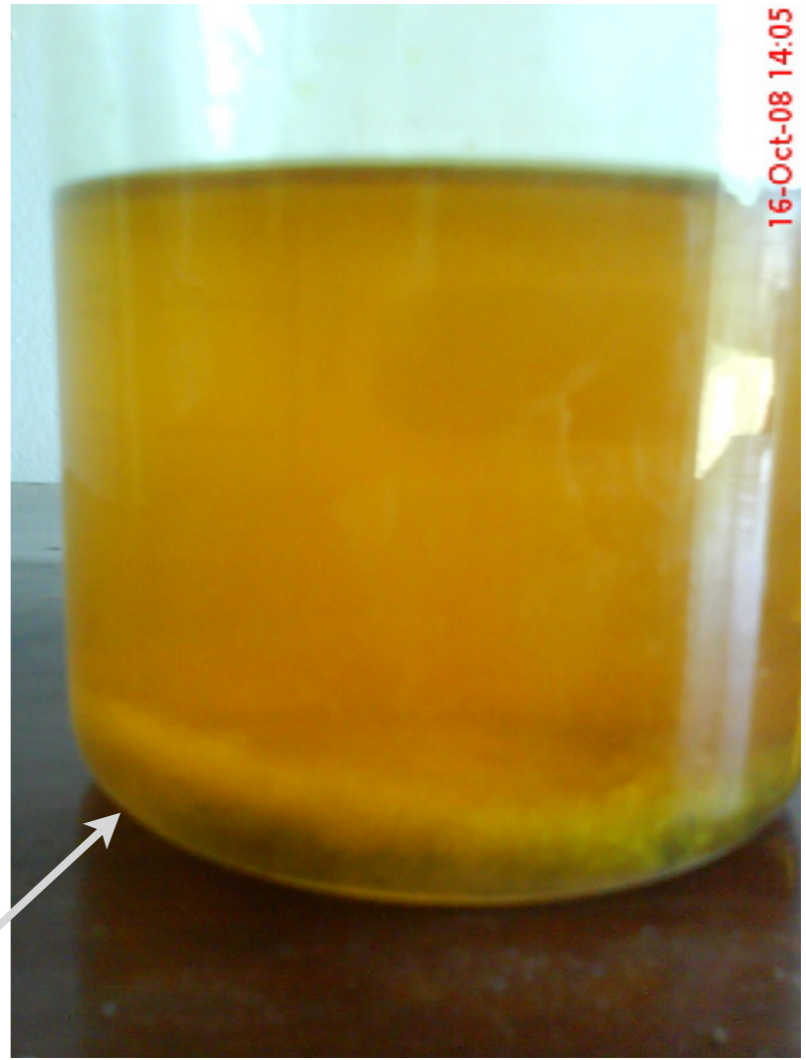
Oil / Degrease Waste can be processed by Bacterial Based DeGrease Systems (BioClean)

Steel Cleaner PRO is compatible with PRO-pHx Acid Extender Systems

Accelerated Process with Steel Cleaner PRO Detergent Additive is Compatible with PRO-pHx (Acid Life Extender)



H2O - 88%
H2S04 - 10%
PRO PHX (1%)
STEEL CLEANER PRO(1%)



H2O - 88%
H2S04 - 10%
PRO PHX (1%)
STEEL CLEANER PRO SCPRO (1%)
Fe (Iron Sample)
Iron + PRO-pHx Accumulates without problem even in solution with SC PRO